

Fagotti II e IV.

63 Allegro. (♩ = 104)

4 Clar.

63

64

mf

a 2.

64

cresc.

ff

a 2.

65

ff

ff

f > p

(♩ = ♩.)

66

dim.

ppp

15

67

sempre a 2. senza accel.

(Campane)
(Glocken.)

f

14

68

f

69

f

Viol.

70

f

Viol. II.

9 10 11

Movement I Brahms — Symphony No. 3 in F Major

2

Bassoon II

89 **F** *f* *p*

96 *dim.* **G** *p* *p*

109 *poco rit.* Hr. I **H** *Un poco sostenuto* *pp sempre* *rit.*

120 **Tempo I** *f*

130 *f* *marc.* **I** *p*

139 *pp* *Solo* *più p*

149 *sotto voce* *p grazioso* *pp* *p*

154 *p* *p legg.*

161 *Fag. I* *p* *cresc.*

167 **K** *f* *p* *cresc.*

172 *f* *ff*

176 *f*

Movement IV Brahms — Symphony No. 3 in F Major

8

Bassoon II

Allegro
p e sotto voce

6 *dim.* *p mezza voce*

13 *pp* **A** 1 *pp* 3

21 3 1

30 **B** *pp* *f*

36 *f* *cresc.*

44 *ff*

51 **C** *p* *f*

59 **D** *p* *f*

66 *p* *f* *ff*

74 **E** *ff*

84

Brahms — Symphony No. 1 in C Minor

4

CONTRA BASSOON

93 *p cresc.* 8 **F** 12 Viol. I

120 Fl. I *pp* 1

Movement IV

Un poco Allegretto e gracioso tacet

Adagio *p* *fp* 4 *string. poco a tempo* 4 Fag. I *p* 3 *string. molto a tempo* 2 *p*

22 **A** *p* *cresc. poco a poco* *f* 1

27 *p cresc.* *sf sf sf sf dim.* *pp* **B** Più Andante 13 Fl. I

47 **C** *p dolce* 9 *Allegro non troppo, ma con brio* Viol. I

65 24 Fag. I **D** *ff* *sf sf sf*

97 *sf sf sf*

104 *f*

109 **E** 13

128 **F** Fag. I 13 Viol. I

148 *ff* *sf sf* 8

Mahler — Symphony No. 9 in D Major

6 Movement II

KONTRAFAGOTT u. 4. FAGOTT.

Tempo II.

Measures 1-23 of the musical score. The first staff begins with a bass clef and a key signature of two flats. The music features various rhythmic patterns and dynamics including *f*, *sf*, and *ff*. A trill (*tr*) is marked in measure 21. Measure numbers 24, 25, and 26 are indicated in boxes above the staff.

Noch etwas frischer.

Allmählich etwas eilend, doch nie überhitzt.

Measures 24-36 of the musical score. The tempo changes to *Tempo I subito. (Ländler, wie zu Anfang.)*. Dynamics include *ff*, *f*, *fp*, and *sf*. A trill (*tr*) is marked in measure 30. Measure numbers 10, 12, 19, and 26 are indicated below the staff. A box containing the number 27 is placed above the staff in measure 30.

27 nimmt Kontrafagott.

Sehr gemächlich.

Nicht eilen bis zum Schluß.

Measures 37-45 of the musical score. The tempo is *Sehr gemächlich*. Dynamics include *f*, *sf*, and *pp*. Trills (*tr*) are marked in measures 40 and 43. Measure numbers 9, 11, and 9 are indicated below the staff. The word "Oboen" is written above the staff in measure 43. A red vertical bar is at the end of the page.

MA MÈRE L' OYE

5 pièces enfantines

MAURICE RAVEL

CONTREBASSON

I, II, III. *TACET*

IV. Les entretiens de la Belle et de la Bête

Mouv^t de Valse modéré

Prenez le 2^d Basson

16

1

10

Clar.



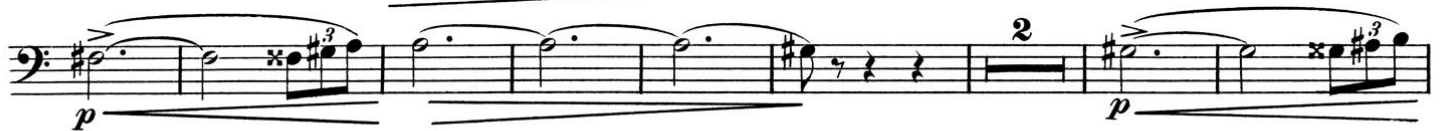
Prenez le Contrebasson

2

C. BASSON SOLO

2^d BASSON

13



Animez peu à peu

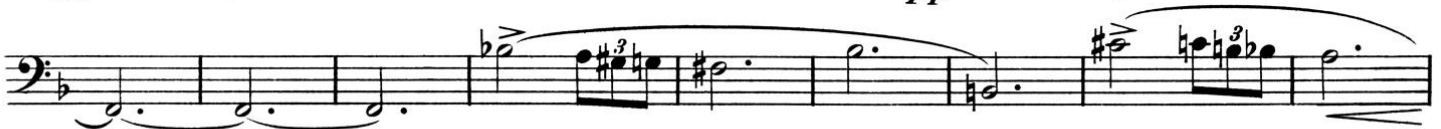


Assez vif

Rall.
von

4

1^{er} Mouv^t
C. BASSON SOLO



V. Le jardin féerique

Prendre le 2^d Basson; suivre sur la partie de "Bassons"

13

2703859B
ISMN M Error!

MATERIEL APPARTENANT
à I

CONCERTO

pour la main gauche

DURAND S. A.
Editions Musicales
21, rue Vernet - 75008 PARIS

DURAND

CONTRAFAGOTTO

MAURICE RAVEL

Lento (♩=44)

Solo
mp

1

p

2

pp

3

cresc. *f*

4

Piano Solo jusqu'à **5** pno Solo

ff *gliss.* *ff*

6

f

7

ff *dim.*

8

p

Rall. **1** Più lento **3**

Tous droits d'exécution réservés
Copyright by Durand & C^{ie} 1937

D. & F. 12,739

Paris, 4, Place de la Madeleine